



## Keep Calm using a Multi-position Hoop

Created by Lisa Shaw for Embrilliance

Mini wallhanging layout using free design from [embrilliance.com](http://embrilliance.com) This project can be stitched in any size hoop, but these instructions talk about the multi position hoop in Embrilliance Essentials

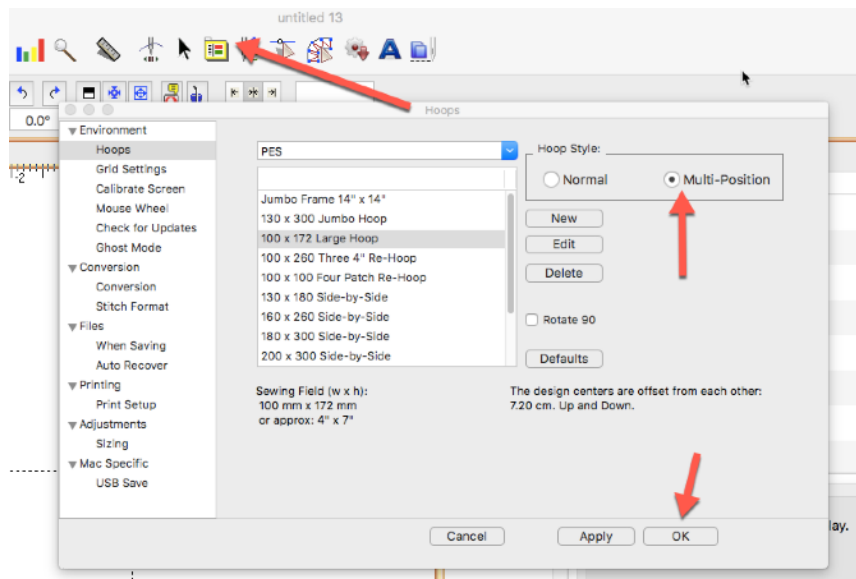
### Materials

- EmbCrown.BE embroidery design from Embrilliance Project blog
- Embrilliance Essentials

### Instructions

1. Go to your program **preferences**, select the PES format and choose the **100mm x 172mm multi position hoop**.

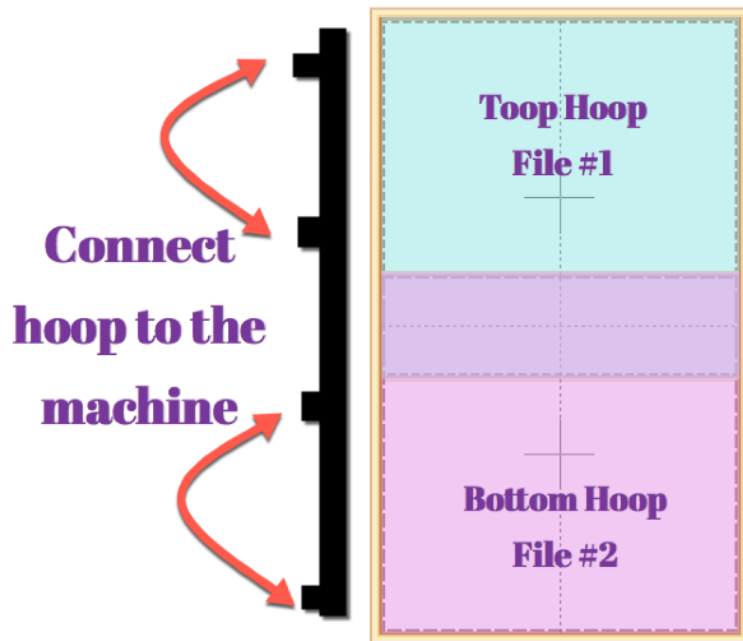
If you have a multi position hoop in a different format, it may be available in Essentials or Enthusiast. However, if you are not familiar with using a multi position hoop layout, you may want to follow these instructions in this format the first time through. Once you have created the layout following these instruction, now you can go back to your format and your hoop and creating the layout will take less time!



2. A multi position hoop layout is similar to a normal or single hoop layout in that the orange gold border shows you the embroider-able area.

A multi position hoop allows you to hoop a larger piece of fabric and attach the hoop to the machine in more than one location. The machine will only stitch the max design size at each position - in this case 100mm x 100mm.

When you connect the hoop in the two top brackets, the max design will stitch in the turquoise area. When you connect the hoop to the machine using the bottom two brackets, the pink area stitches. The blended color in the middle is the overlap between these two sections. YES, you can also connect the hoop to the machine using the center two positions. But since there is such a large overlap already, the software does not use the center position when splitting automatically.



What's different from a single position hoop visually in the Embrilliance software, is that you see cross hairs in the center of each hoop position and dashed lines for you to use as a guide for each position. You can use these visual guides when combining designs to avoid excess splitting OR to force a cleaner split in a future project.

Your working file will always contain all of the design elements and objects in tact. This is important because you may look at the split sections and decide that if you move or resize elements, the split stitch files will create a more efficiently stitching design at the machine.

Also note that each split stitch file will contain a basting box as the first color break. This "locks" the stitches in this section to the exact center of the position in the hoop. Do not remove these stitches or your sections will not line up in the hoop automatically.

The last color of File #1 and the first color of File #2 is an alignment line. It does not need to be stitched, however if you do stitch them, you will see that the line up RIGHT ON TOP of each other. If they do not, you may want to move File #2 at the machine using your on board editing function until the alignment line of file #2 is on top of the line from file #1. It is included as a double check and could save some stress when working with dense designs or fabric that is not 100% stable (like knits).

Depending on the stitching order of the design, the names, File #1 and File #2 may be in

different positions. For example if your layout should stitch in the bottom position first, it will be saved as File #1. The stitching order is listed in the companion text file that is created when you save your layout.

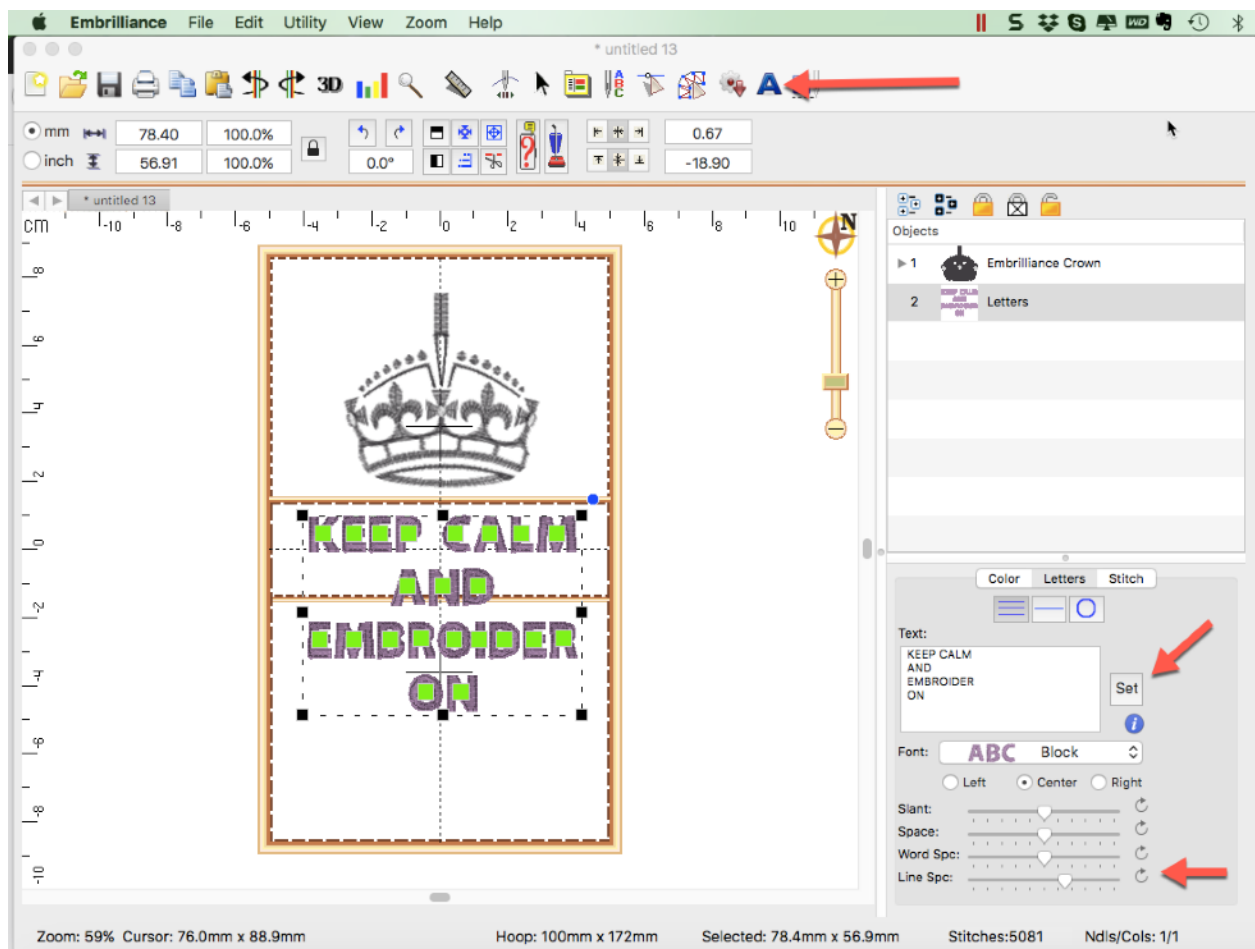
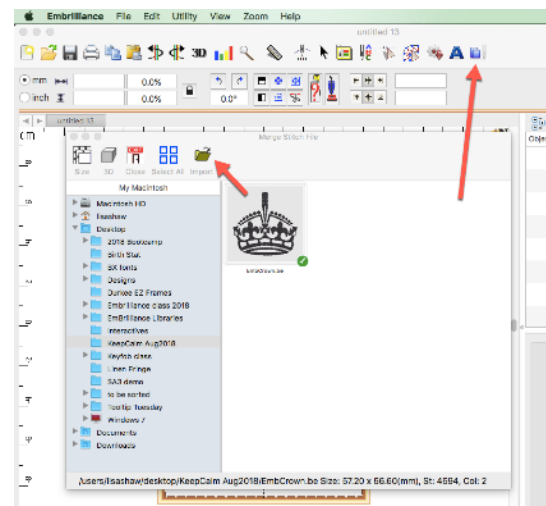
3. Merge in the Emb Crown.BE design using the Merge Stitch File function.

It will be placed in the CENTER of the entire hoop layout.

Move it to the upper location of the hoop using your grid as a guide.

NOTE: When the design is selected, you see black handles on each corner as well as in the exact center of each side. Placing the center top handle on the center gridline of your hoop is a helpful tip.

4. Click on the lettering tool and change the ABC text in the lettering properties pane to KEEP CALM AND EMBROIDER ON. We used all capital letters in Block font to keep with the traditional style of the Keep Calm memes.



We are in multiline text, so when you hit the ENTER key at the end of each line of text this goes to a new line. The ABC in your hoop will not change until you have finished entering your text and choose SET.

Use the Line Space slider at the bottom of the Lettering properties pane to adjust the spacing between the lines of text. NOTE: If you do not see this slider, make this pane taller by moving the divider between the two panes with your mouse cursor.

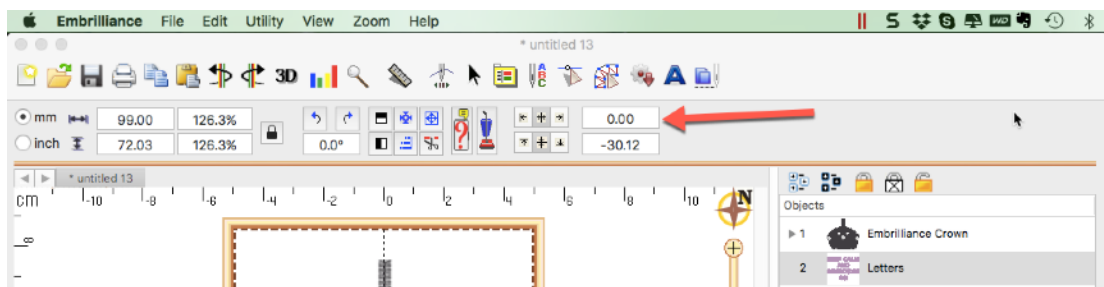
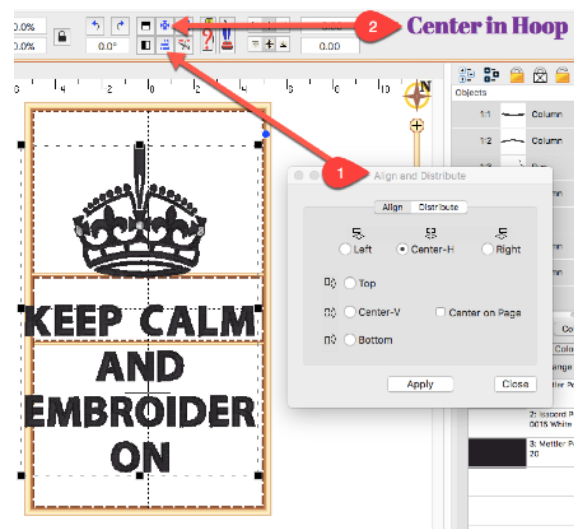
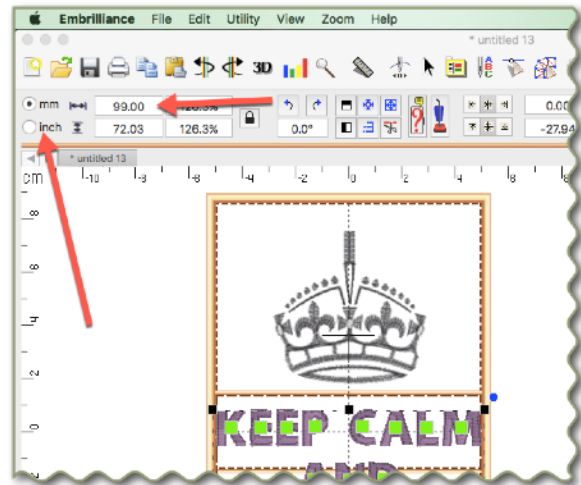
5. Enlarge the lettering using the handles on the lettering object or by typing a value in the menu bar.

NOTE: The machine embroidery measurement standard is metric. You can easily switch between measurements using the radio buttons on the menu bar. Metric allows us to be extremely accurate. Our max width for this hoop is 100mm, so if we are in metric measurement with our lettering object selected and type in 99 for the width, the software will enlarge the lettering object to 99mm wide which gives us 1 millimeter wiggle room :-)

6. Move your lettering in the hoop to create a visually pleasing layout. Use your grid lines to help with centering.

You can also use the Align function. Select BOTH objects on your page and click on the Align and Distribute button. Select Align, Center-H and click Apply. This will align the horizontal centers of both items with each other. Click Close and then choose to center in hoop while both objects are still selected.

NOTE: For those that also have Enthusiast, you can use the Precise positioning on each object separately. Select the Crown and set the horizontal center to 0. Select the lettering and set the horizontal center to 0.



- Once you are happy with your layout, you will want to save your work. Using the **File > Save As** function will save multiple files at one time. As always you will get your working file with the BE extension that contains all of your design objects, colors, original size and more.

Be sure to type in a name for your design, make a note of where you are saving the file (like a folder on your desktop) and click on Save.

- I have Thumbnailer installed so I can show you the results of what is saved in my Finder (would look similar in Windows Explorer)

Gold Box #1 shows the BE working file - the entire design layout. If you want to manipulate this design layout in Embrilliance in the future, open the BE file.

Gold Boxes #2 show the TWO stitch files that you will send to the embroidery machine. They each have a # in their name referring to the stitching order.

Gold Box #3 shows the TXT file. This text file tells you the colors in each design along with the position of the hoop each file needs to be stitched at the machine. In this sample, File #1 will stitch in the top position and File #2 in the bottom position. See the picture and explanation at the beginning of this PDF for more details!

