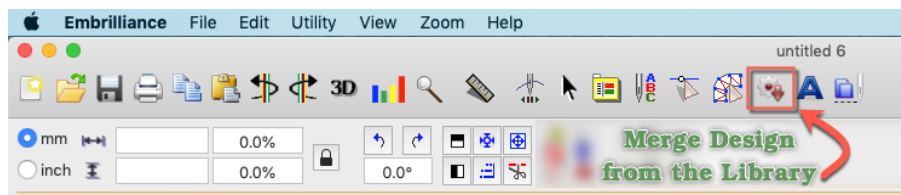




What is this BX file and how can I use it?

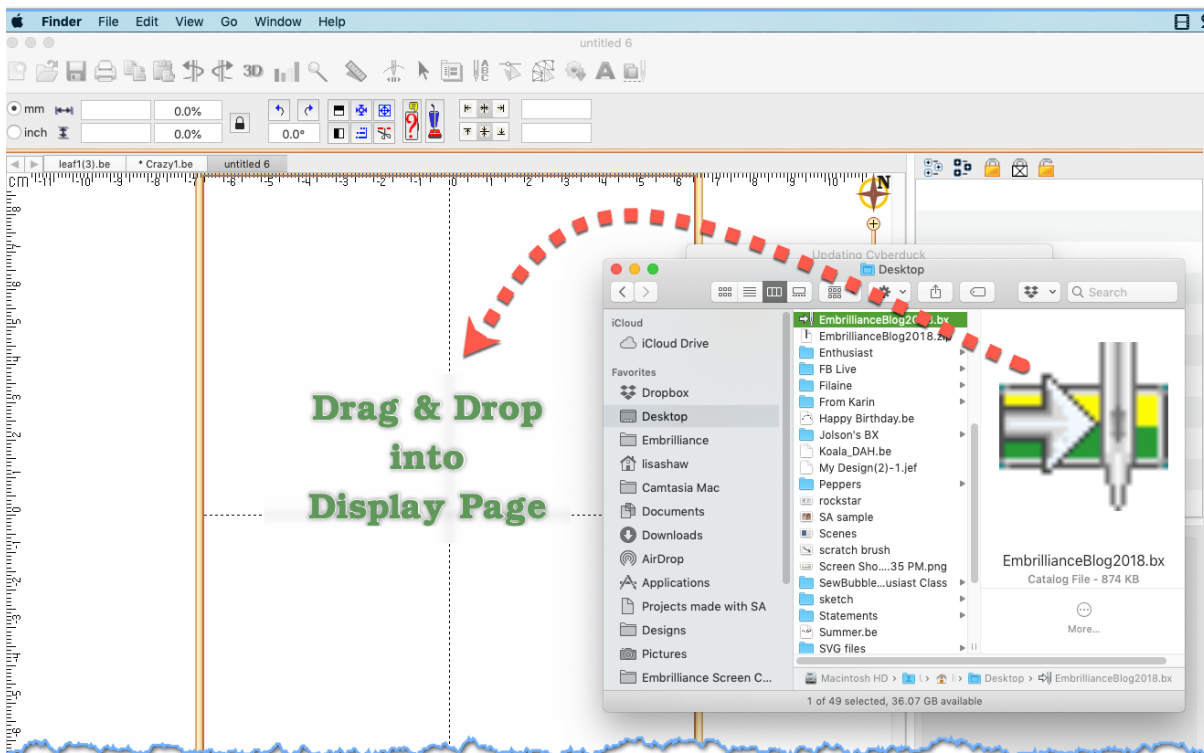
The BX format is a special installation file exclusive to the Embrilliance software . A BX installation file can contain different types of content - from fonts to design libraries to thread palettes and more! So, in a nutshell, you install a BX into the Embrilliance platform and voila - you have new content available.

This particular BX installation file is a Design Library. Once installed, you will find this library in your Embrilliance program under the gear shaped button, Merge Design from the Library.



How do I Install the BX files?

If you are already familiar with the BX installation file, these can be installed in the same way as your BX fonts - double click on the BX file or drag and drop them onto your open design page and click ok to the confirmation screen.



The Windows and Mac interfaces for the Embrilliance Platform are so similar!

How To Access

Your Library will now be available from the Merge Design from Library  dialog box.

Sometimes, depending on OTHER programs you have running in the background (like antivirus/security software), the program files are not refreshed until you close and reopen the program.

Select the design that you want to add to your design page and click OK.

The design is placed in the center of your hoop and you can use or modify the design to make it unique to you using whatever program you have. YES, if you only have Embrilliance Express, you can add lettering to this design and save to your format!

You will notice that we have added information to the NOTES field for each design. This information contains tags or descriptors about the design - for example this butterfly is a mylar embroidery design. We have also included the link to the project blog post which may include additional information such as PDF stitching instructions or links to videos that related to this project.

Please refer to your [Embrilliance Platform Manual](#) for more information on the StitchArtist features and functions!

