



## Applique Vampire CandyCorn

Created by Tiffany Lehman for Embrilliance

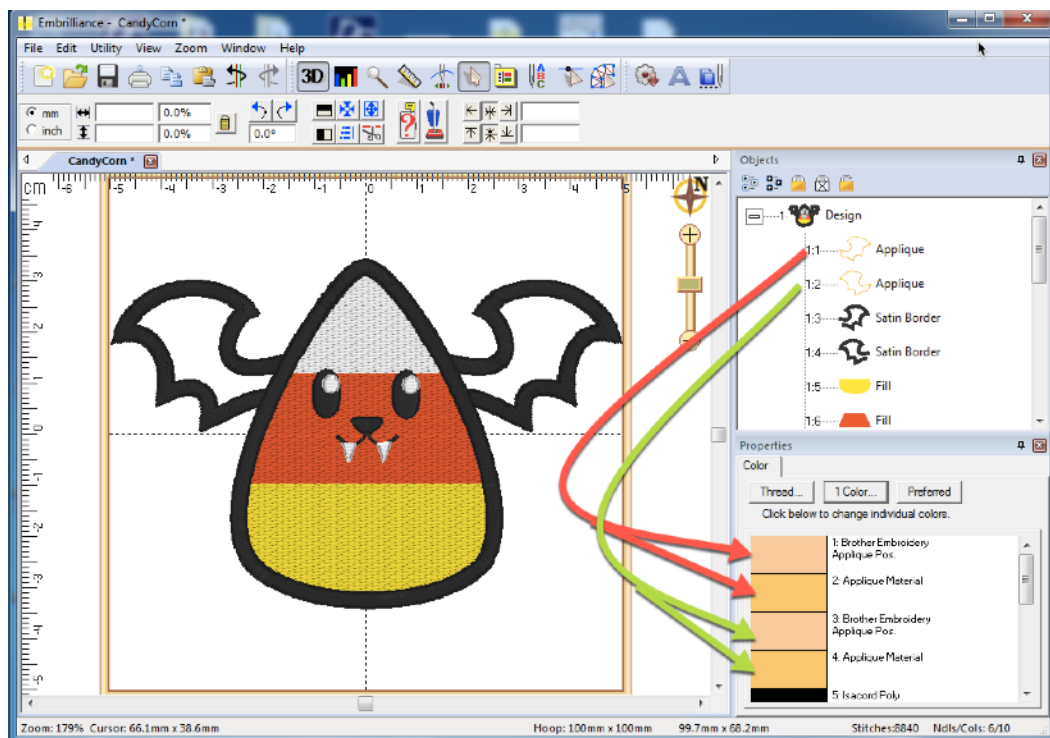
Tiffany created this adorable festive design using StitchArtist. The bat wings are appliqué and with StitchArtist Level 1 and higher, you can bring in photos to use as your appliqué fabric material. This is a handy feature for previewing different fabric OR for creating mockups of your appliqué embroidery designs.

### Materials

- VampireCorn.BE embroidery design from Embrilliance Project blog
- Embrilliance StitchArtist any level
- A low resolution photo (JPG, PNG, or BMP) of the fabric you want to use for appliqué
- 40 wt embroidery thread

### Instructions

1. Open the VampireCorn.BE file in your Embrilliance StitchArtist software.
2. All of the drawn objects are available to you. The wings are appliqué set with a border style of None. A border is created to stitch after so that there will not be a lump where the stitches of the candy corn cover the ends of the wings.



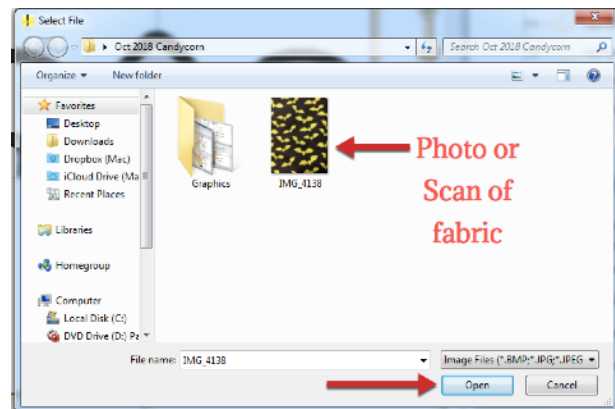
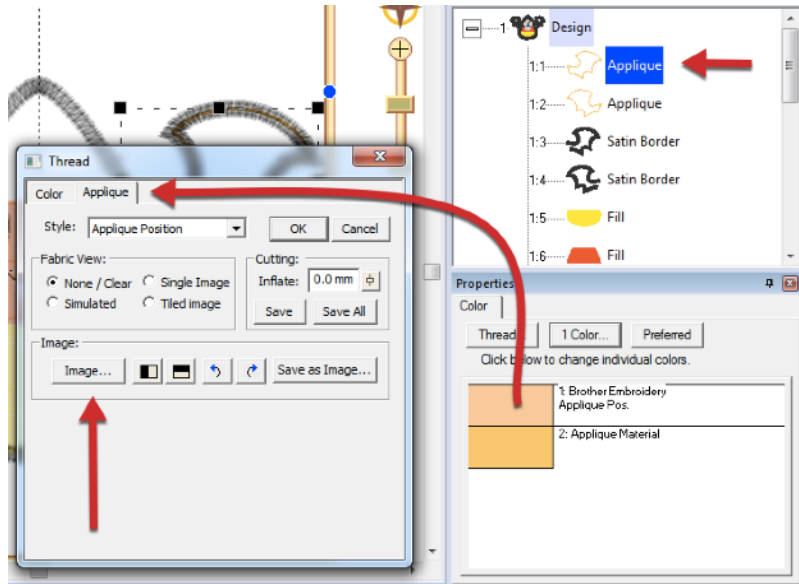
3. **Select the first appliqué object**, go to the Color Tab in the properties pane and click on the **Applique Position** color chip to open the thread properties dialog. **Switch to the Applique Tab at the top.**

StitchArtist adds the Image adjustment section to the this Applique Properties tab of Embrilliance Essentials and StitchArtist. Instead of using a fabric simulation, StitchArtist allows you to choose an image, such as a photo of fabric taken with your phone and saved to your computer, and bring this in as your “fabric simulation.”

4. **Click on the image button** and browse to where you have saved the image of your fabric. Remember that this is for a mockup, so a high resolution large image is not required.

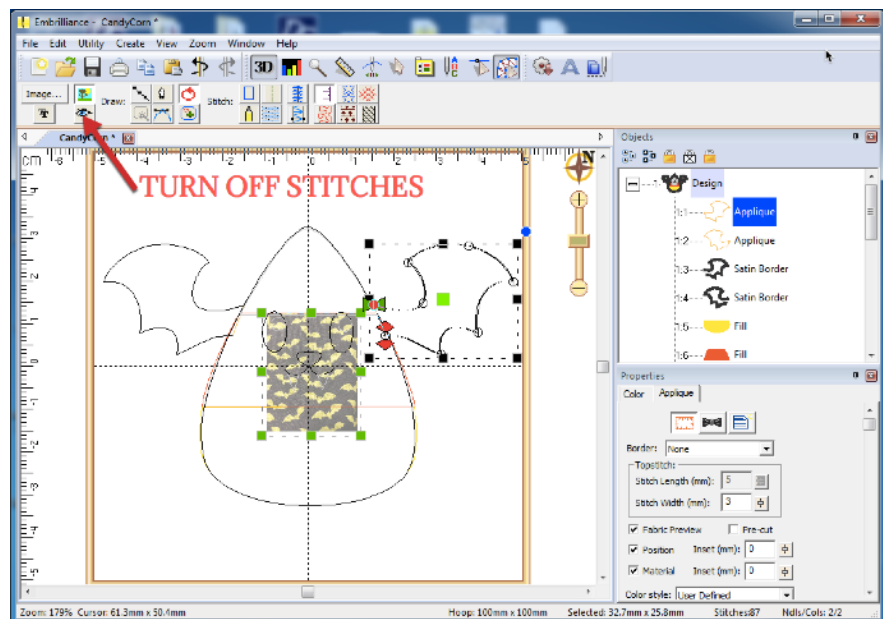
**Select the image** and choose **Open**.

5. The image may be pulled in behind other objects that are filled with stitches.



In order to move, size and rotate the fabric image easily, make sure that you are in **Create mode** and click on the “**eyeball**”. This button on the top menu bar toggles the stitches on/off in the display pane.

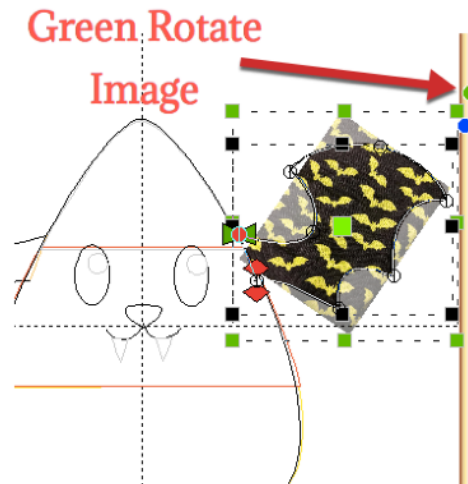
The key point is to remember that you turned off stitches in the display pane - you don't want to be startled and think something is broken in the future!



6. With the stitches turned off, you can see the inserted image that is now linked to the selected appliqué object. Your object has blue handles and the image has green - just one way to help you differentiate the two in the future.

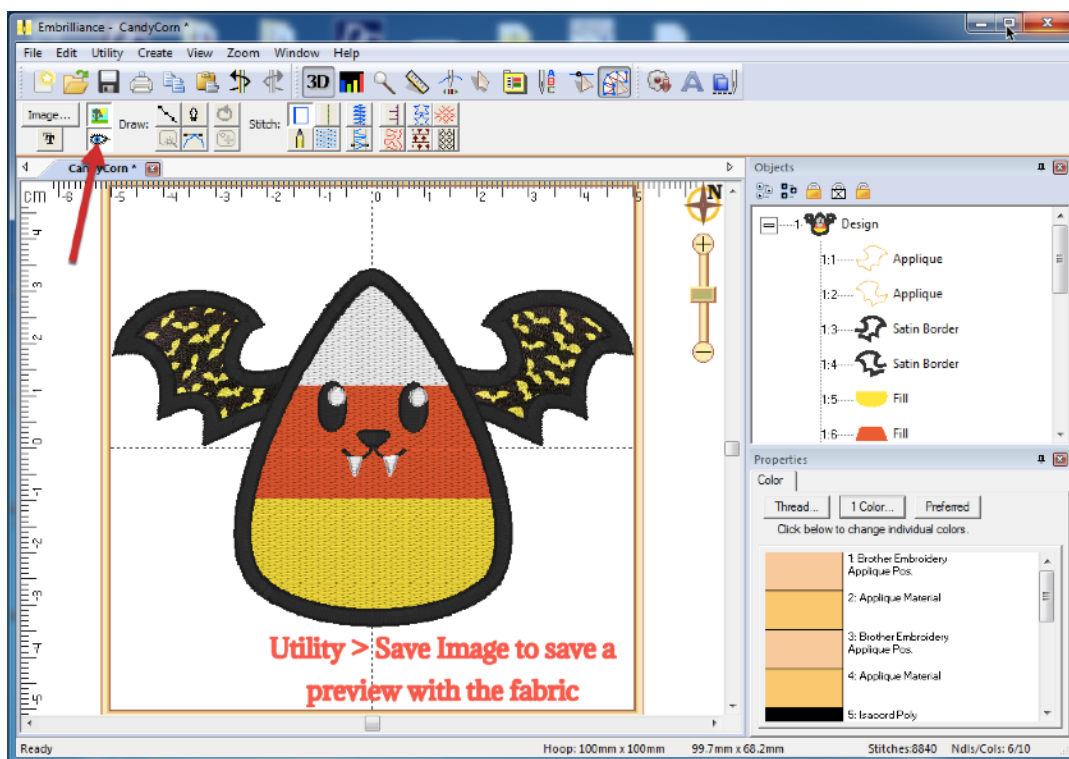
Move the image “inside” the appliqué object and you will notice that the image is ‘vibrant’ inside the shape and grayed out outside the object.

When you click OFF the object, you will see that the image you brought into the appliqué is “trimmed” to fit the shape - just as if you had cut it out of the fabric!



Repeat these steps for the other vampire wing appliqué position.

**NOTE:** be mindful of pattern scales of the fabric image. Use your grid to enlarge or shrink the fabric image. You don't need to be spot on accurate, but close enough so it looks believable. If you do want accurate - take a photo of the fabric next to a ruler and enlarge the image until 1" on the ruler is 1" in your hoop.



7. Turn back on your stitches and admire your embroidery design with the fabric you've selected. Would you like to create a “proof” or “Mockup” of your design to send to a customer? Go to **Utility > Save Image** and you can save a picture of this design as either a transparent PNG or a JPG file.